



الشركة الوطنية للتعدين  
National Mining Company



**NATIONAL MINING COMPANY**

رؤية  
**2030**  
المملكة العربية السعودية  
KINGDOM OF SAUDI ARABIA



“ WE’LL BE THERE WITH YOU,  
WORKING FOR YOU,  
EVERY STEP OF THE WAY. ”



*«In the name of God, the Most Gracious, the Most Merciful»*





**KING SALMAN BIN ABDULAZIZ AL SAUD**  
Custodian of the Two Holy Mosques

“ My first objective is for our country to be a pioneering and successful global model of excellence, on all fronts, and I will work with you to achieve that. ”



His Royal Highness Prince  
**MOHAMMAD BIN SALMAN BIN ABDULAZIZ AL SAUD**  
Crown Prince, Deputy Prime Minister, and the Minister of Defense

“ Our people will amaze the world again. We are confident about the Kingdom’s future. With all the blessings Allah has bestowed on our nation, we cannot help but be optimistic about the decades ahead. We ponder what lies over the horizon rather than worrying about what could be lost. ”

## INTRODUCTION FOR NTCC AND ITS RELATED SUBSIDIARIES

National Tri-Generation Company (NTCC) is a fully-fledged energy and cooling solutions company based in Riyadh, Kingdom of Saudi Arabia. NTCC is a joint stock company with a paid-up capital of SAR150,000,000.

NTCC has alliances with international companies specialized in providing total energy solutions which give the company the technological aptitudes and capabilities to develop and invest in cooling & power plant projects; supported by our three subsidiary companies:

Source Energy (SE) in partnership with our clients' finances, develops, builds, operates and maintains advanced power technology solutions that serve the long-term heating, cooling, and power requirements of commercial, industrial and government clients.

Backed by significant financial resources and an extensive network of influential relationships, Source Energy takes full responsibility for ensuring clients' efficient, sustainable, reliable district and dedicated energy and cooling services, which are customized to their requirements from a single outsourced provider.

The management team of Source Energy come with collective and broad expertise in the fields of engineering, environmental issues and energy.

Our professionals offer a proven track record of advisory capabilities in business strategy and long-term energy development.

Intelligent Energy Solutions (IES) is a subsidiary of National Tri-generation CHP Company.

IES is a leading provider of rental power and thermal solutions offering a broad spectrum of the highest quality power generation equipment, Solar system, HVAC, and services related to residential, commercial and industrial projects in Saudi Arabia.

IES provides a comprehensive range of equipment and the expertise to deploy the most complex projects in the energy field successfully.

IES provides short and medium-term power generation rental solutions as well as (PPA) Power Purchase Agreement to clients who need to reduce energy costs, or have no power availability.

We provide the most comprehensive range of equipment coupled with the relevant engineering and commissioning services to ensure proper installation and operation.

IES has a single source of responsibility of services covering the design, engineering, installation, testing & commissioning, after-sales service for diesel generators from 30 to KVA and the implementation of Turnkey Power Plants Projects.

NTCC is specialized in providing a range of reliable and cost-effective power, cooling, mining services, operation & maintenance services, O&M consultancy, energy efficiency, solar EPC, and hybrid solutions.



## TABLE OF CONTENT

08	WE ARE
10	VISION / MISSION
12	SAFETY
14	MINERAL EXPLORATION
16	BLASTING SERVICES
18	INTEGRATED MINING SERVICES
21	GEOLOGICAL SUPPORT & CONSULTANCY
22	DRILLING
23	CRUSHING & SCREENING
24	PORTFOLIO
30	TEAM TRACK RECORD
31	SUPPLIERS
32	GEOGRAPHICAL COVERAGE



## WE ARE

**National Mining Company (NMC) has been established by a group of national institutions specialized geological services, rock cutting general earthworks and mining operations.**

NMC keeps pace with the rapidly ever-changing Saudi Arabian market, by continuing to consider key strategies and best practices such as market research and adaptability, local partnerships, regulatory compliance, localization, technology and innovation, clients' engagement, competitive analysis, marketing and branding, employee training, financial training, networking, long-term vision, and last but not least sustainability.

By implementing the aforementioned strategies and remaining agile, NMC continues to be better prepared to thrive and succeed.

We endure to expand in the field of heavy industrial investment with long-term investments in the Kingdom of Saudi Arabia.



NMC is looking forward to proactively contribute to developing Kingdom of Saudi Arabia as per Vision 2030.

NMC provides services ranging from individual consulting through complete operations.

In other words, you can hand over your project to us, and we will take it from there.

We offer a wide range of technical services including, geology, exploration project management, samples preparation, orebody modelling and mineral resource estimations, ore reserve statements, drilling (Surface

and underground diamond core drilling, conventional core drilling, reverse circulation (RC), air core drilling, rotary drilling, grade control drilling & geotechnical drilling), land use surveying, roads design and mining for mines and quarries, geotechnical investigations, quarry/mine designs and production planning, drill and blast, quarry/mine management and crushing and screening.

We have the fleet and the workforce with essential technical and managerial expertise.

**WE DEDICATE OUR SERVICES TO ADD VALUE TO YOUR PROJECT THROUGH ROBUST MINERAL SCIENCE APPLICATIONS, SMART MANAGEMENT AND GOOD LEADERSHIP.  
WE ARE TARGETING CLIENTS RANGING FROM PRIVATE INVESTORS TO MAJOR COMPANIES.**



## OUR VISION

To grow sustainably and become the premier and the leading company in disposal, drilling, blasting and mining services in the MENA region

To reach the superior level in exploration, drilling, engineering and mining services and to be elevated by our clients as the best business partner

To be a leader in innovation, service and quality

To be one of the most admired and respected companies in our industry

## OUR MISSION

National Mining Company (NMC) strives to offer a fully-integrated exploration, drilling, engineering and mining services for the mining sector in an economical and professional manner.

To develop and support every aspect of our business with the highest level of integrity and to remain dedicated to our clients as business partners.



## CORE VALUES

- Unity
- Professionalism
- Transparency
- Accuracy
- Dedication
- Workforce Safety

## OUR TEAM

We continue to train and develop our team because our future depends on it.

We encourage an environment that removes bureaucracy, provides open communication, and respects professional judgment based on life experiences and training.

We support our people through the toughest challenges in their personal and professional lives.

## OUR CLIENTS

Providing excellence in all areas of client service has been the cornerstone of our business.

We pride ourselves on listening to our clients, being responsive to their project requirements, and exceeding their expectations.

We 'do it right' the first time.

We bring our creativity and innovations to each project, to make sure we offer the highest quality product for the owner's investment.

## OUR PARTNERS

NMC has an exceptional reputation for employing the best trade's people in the area. Our sub-contractors are long-term business partners. We hold our sub-contractors to the same high standards of quality and professionalism as we do for our employees.

## SUBCONTRACTORS/SUPPLIERS

We recognize that we are partners with companies who work with us. We make sure that any contract we enter into will be fair to both parties. We treat them with respect and pay them in a timely manner.

## OUR EMPLOYEES

Working at NMC is not just a job; it is our career; and more importantly, it is our passion. Teamwork, mutual respect, and a safe and healthy workplace have been an integral part of our culture and continue to do so.

## OUR COMMUNITY

Every mining project is part of a community; we take our responsibility of making sure our remodelling, renovation, restoration, or mining project becomes part of the greater neighbourhood and community spirit and sustainability.



## CODE OF ETHICS

NMC is dedicated in revitalizing its people, resources, knowledge, experience and committed to serve the community in which it is engaged.

This is achieved by providing premium quality of mining services at fair rates, being responsive to the client's needs in a responsible and efficient manner, and producing a sustained growth posture that will secure a dominant position in the field of mining for years to come.

NMC is devoted to maintaining high quality standards, upholds work ethics that empower employees and ensure better working conditions requisite for top quality output and customer satisfaction.

## SAFETY

MINING THE FUTURE AT NMC, we understand that accidents are prevented through careful planning, training and cooperative efforts in all areas of our operations. Therefore, safety is the responsibility of every NMC employee. All work is performed in the safest manner possible consistent with good mining practices.

Mining is a unique industry in terms of safety challenges and advancements. While mining methods and techniques have improved, consistently increasing industry efficiency and productivity, the accident incidence rate for mining continues to be of concern. Direct and indirect job costs for doing business are known to fluctuate in direct proportion to the incidence of accidents.

Effective preventive measures must be identified and successfully applied. By instilling a deep commitment to safety that reaches from management to craftworker, we have achieved industry-leading safety performance, while improving productivity and maintaining low costs.



## HEALTH, SAFETY & ENVIRONMENT POLICY

NMC is a safely conscious mining contracting entity committed to maintaining the highest standards of HS&E in the industry in order to eliminate conditions and incidents that could result in personal injury, ill health or damage to the environment.

NMC believes that the health and safety of its employees is of prime importance to the success of its operations.

The company is committed to conduct its operations in a safe and productive manner that will not hurt people or endanger their life.

NMC will comply with all appropriate laws and regulations related to occupational health and safety in all areas of its business activities. In line with this commitment, we will ensure compliance with proper work practices as determined by our safety management systems, which are integral to the company operational procedures.

NMC is committed to implementing well-designed, managed and regulated exploration and mining operations to maintain a consistent balance between our environmental and economic responsibilities. By proactively monitoring and managing the potential environmental impacts of exploration and mining activities.

Those impacts can often be mitigated or eliminated throughout the entire operation, from exploration to production to eventual shut down and closure.

**To ensure a very high standard of safety and health is maintained, NMC is committed to the following:**

- All equipment shall be maintained in a safe operating condition
- All workers and others shall be physically and mentally fit for work at all times
- All accidents / incidents and near misses shall be reported and investigated
- Provide information to employees on potential hazards in the workplace
- All employees shall follow nominated safe working procedures
- All employees shall wear required protective clothing
- All employees shall care for the safety and health of fellow employees
- The hierarchy of hazard control shall be applied to risk management at all times
- Smoking is not permitted in working environments unless otherwise designated
- Standard work procedures shall be developed, implemented and regularly reviewed
- Ongoing training shall be provided for all workers
- Be committed to minimizing its impact on the environment at all its working sites





## MINERAL EXPLORATION

We offer a wide range of exploration services, reflecting our broad geological interests and the diverse expertise of our team.

In general, we get involved with projects from grassroots exploration through to the pre-feasibility stage, and these can range from a simple property evaluation and technical report preparation to running and managing entire exploration programs, depending on the client's requirements.

NMC's team has proven expertise in a wide variety of geological settings and deposit types.

We always adhere to current best practices in health and safety and environmental management, while ensuring that all exploration work is undertaken and completed in compliance with international standards.

### OUR MINERAL EXPLORATION SERVICES

- Geology
- Samples Preparation
- Orebody Modelling and Mineral Resource and Mineral Reserve Estimation
- Mineral Exploration Project Management



## OUR MINING SERVICES

- ✓ **BLASTING SERVICES**
- ✓ **INTEGRATED MINING SERVICES**
- ✓ **GEOLOGICAL SUPPORT & CONSULTANCY**
- ✓ **DRILLING**
- ✓ **CRUSHING & SCREENING**





## BLASTING SERVICES

This division was established to provide clients with high-quality blasting services at competitive prices.

NMC has recognized the need to elevate the quality level of the rock-cutting industry in Saudi Arabia by using only explosives that have been authorized by relevant authorities for civil purposes.

### WHAT DO YOU GET WITH NMC?

In line with our commitment to the highest quality standards, we will supply the following:

**1** A blasting expert, licensed by the relevant Saudi authorities is responsible for the assessment of the needed supplies, ensuring that the required explosives are delivered to meet the targeted delivery dates, and conducting the blasting work in accordance with the local standard regulations.

In addition to that, a team of highly skilled blasting technicians is always available to execute these tasks with.

**2** The operation of rock drilling and blasting works is carried out by deploying a fleet of hydraulic crawler drill rigs and the blasting operations are executed by highly qualified blasting experts and technicians specialized in this field with vast experience and with the assistance

of a team of surveyors, geologists, mining and civil engineers as we have mentioned above. Furthermore, the blasting department of NMC is highly qualified and experienced in all types of blasting works such as smooth blasting, cushion blasting as well as underwater blasting operations.



IT WOULD BE A PLEASURE COUNTING YOU AMONG **OUR ESTEEMED CLIENTS.**

**3** All necessary specialty vehicles that meet top international specification standards for the safe and secure transport of explosives and ignition materials for civil purposes in Saudi Arabia.

**4** Experienced drivers with special training in the safe and secure transport of explosives.

**5**

Blasting machinery that are suitable for the selected ignition materials and blasting system.

National Mining Company (NMC) has a variety of blasting equipment available with different capacities and systems to, precisely, meet the needs of each project.

**6**

Special measuring devices capable of detecting any electrical failures and measuring resistance to verify accurate connections.

Everything we supply is designed to finish our projects on time and within the estimated budget.



# INTEGRATED MINING SERVICES

National Mining Company (NMC) provides an integrated set of mining services required to improve its clients' mining projects, whether those projects are new or existing mines or quarries.

Our goal is giving the client the highest degree of confidence in their mining project through appropriate analyses and interpretations.

This approach is essential in supporting decision-making and developing effective strategies for mining projects.

To achieve this goal, we consider the following key steps: comprehensive data analysis, geological studies, risk assessment, market research, environmental impact assessment, feasibility studies, financial modelling, technical expertise, last but not least continuous monitoring.

By following these steps and focusing on thorough analyses, risk assessment, and strategic planning, we can provide our clients with the confidence they need to navigate the challenges and uncertainties inherent in mining projects.



MINE DESIGN AND PLANNING

Mining Services



DRILL AND BLAST

Mining Services



TECHNICAL AND OPERATIONAL MINE AND QUARRY MANAGEMENT

Mining Services



Our range of in-house technical services enables us to provide fully integrated mine and quarry design services that take into account key factors including the geological nature of the resource and development costs.

## Our mine design and planning services include:

- Mine/Quarry design
- Mine/Quarry access and services designs. Stockpiles and waste dumps designs
- Drill and blast design
- Waste/ore definition
- Determination of fleet requirements
- Mine/Quarry opening details and developments
- Detailed mine production plans and scheduling
- Complete long-term & short-term mining plans
- Detailed shift-by-shift scheduling of all activities
- 3D visualization models
- Capital and operating cost estimates

## DRILL AND BLAST

NMC is able to provide a quality drill and blast service for any surface mining operations on any scale, at any location across our field of operations in Kingdom of Saudi Arabia.

Our drill and blast team includes well-experienced and certified blasting engineers with an approved Saudi license.

## Our drill and blast services include:

- Drilling pattern design
- Blasting circuit design
- Supplying authorized Shot - Firer
- Blast monitoring reports
- Obtain blasting permits for projects
- Supply explosives and detonators to blasting sites

## MINE DESIGN AND PLANNING

Mine planning is an absolute requirement of world's best mining practice.

It's an essential component of efficient integrated mining operations, which provides the road map to optimum production outputs and thus maximizes cost efficiency and performance.

NMC has expertise in producing detailed mine designs and production plans to drive sound investment decisions for your potential mining projects and active mines.



## TECHNICAL AND OPERATIONAL MINE AND QUARRY MANAGEMENT

Our specialties in mine development, planning and project management can extend the life of a mine, using the latest techniques and specialized equipment, and also provides more profitable approaches to mining projects, new ways to overcome problems and ensuring optimal equipment utilization with safety as a priority.

**We are able to provide total mine management services as we are capable of the following:**

- Initiating and implementing mine/quarry designs and production plans
- Providing your site with all required equipment for short or long-term
- Optimizing operational equipment
- Initiating drill and blast designs
- Drill and blast implementation
- Initiating and implementing grade control drilling and reconciliation
- Providing on-site technical personnel required for short or long-term vacancy periods across technical and operational roles at senior and junior levels



## GEOLOGICAL SUPPORT & GEOLOGICAL CONSULTANCY

**Based on our knowledge of the importance of the geological role in our field and in response to achieving and keeping pace with the Saudi Vision 2030 regarding the tripartite pillar of the economy.**



With the aim of developing and diversifying the services provided by National Mining Company (NMC), so that we provide our clients with integrated services in this field.

We are proactively in attracting geological experts globally and regionally so that we could provide high-quality service and train national cadres.

NMC provides comprehensive geological services to many sectors in Kingdom of Saudi Arabia. We deliver both in-field and desktop services to a diverse range of clients who are interested in mineral exploration and mining.

The understanding of the sub-surface geology should always be a key priority and supported by good data, whatever the nature of your project.

At NMC we have the technical “know-how” and the experience to progress a geological project through all of the required stages.

### DESK STUDIES

Geological desk studies is the cornerstone on which to start exploration work, including viewing all available geological “regional, local and detailed” studies.

### RECONNAISSANCE GEOLOGICAL STUDIES

In this stage the technical team carries out field visits to check the availability of logistics for the project, in addition to recording the geological field observations to identify the main types of rocks, geological structures, and general geological properties of the study area.



## DRILLING

We provide professional service in the most demanding environment.

We can plan, design, supervise, manage and implement drilling projects, in all locations and under any circumstances.

As a full-fledged company, we specialize in drilling operations for exploration, geotechnical, development and production drilling.

Our drilling capabilities include surface and underground wireline diamond coring drilling; conventional core drilling; reverse circulation drilling (RC); air core drilling, air/mud rotary drilling; grade control drilling and geotechnical drilling as well as a full suite of support activities needed for a successful operation. We see ourselves as an extension of our client's business and aim to work with them to achieve their business needs.

We have the financial resources and expertise to deliver on any size project, from delivering rigs to suit your specific needs, to ramping up quickly to meet a tight deadline.

NMC is capable of getting the job done safely, efficiently, on time, and on budget.

We have high quality rigs and experienced crews. Using sophisticated drilling software and instruments coupled with our expertise, we strive to not only meet but exceed our clients' expectations.

NMC ensures that whatever your needs are and wherever your site is located, the drilling won't stop.



### OUR DRILLING SERVICES

- Surface and Underground
- Diamond / Wireline Core Drilling
- Conventional Core Drilling
- Reverse Circulation Drilling (RC)
- Air Core Drilling
- Air and Mud Rotary Drilling
- Grade Control Drilling
- Geotechnical Drilling

## CRUSHING & SCREENING



NMC can supply key contract crushing and screening services for mines, quarries, cement plants, gold plants and other extractive operators for different raw materials including limestone, dolomite, phosphate, granite, etc.

We offer all the main types of crushing, for primary, secondary, tertiary and fine grinding applications in the quarrying, mining and recycling industries.

We offer a wide range of crushers and screens comprises a variety of types and brands for contract crushing purposes: jaw crushers, cone crushers, impact and VSI crushers.

These can also be fitted with a wide range of screen media including Inclined, horizontal and multi-slope for a wide range of applications, to suit your individual needs.

Screens can be washing or dry, depending on your application.

Depending on the job at hand and the specific outputs, NMC has the capacity and capability to offer crushing and screening services that satisfy just about any scope of works in any location across Saudi Arabia.

Our field-proven rock crushing solutions will give you years of dependable and profitable service.





# Project

PORTFOLIO  
INTEGRATED MINING

Project





# Project

PORTFOLIO  
INTEGRATED MINING

Project





# Project

PORTFOLIO

## INTEGRATED MINING

Project





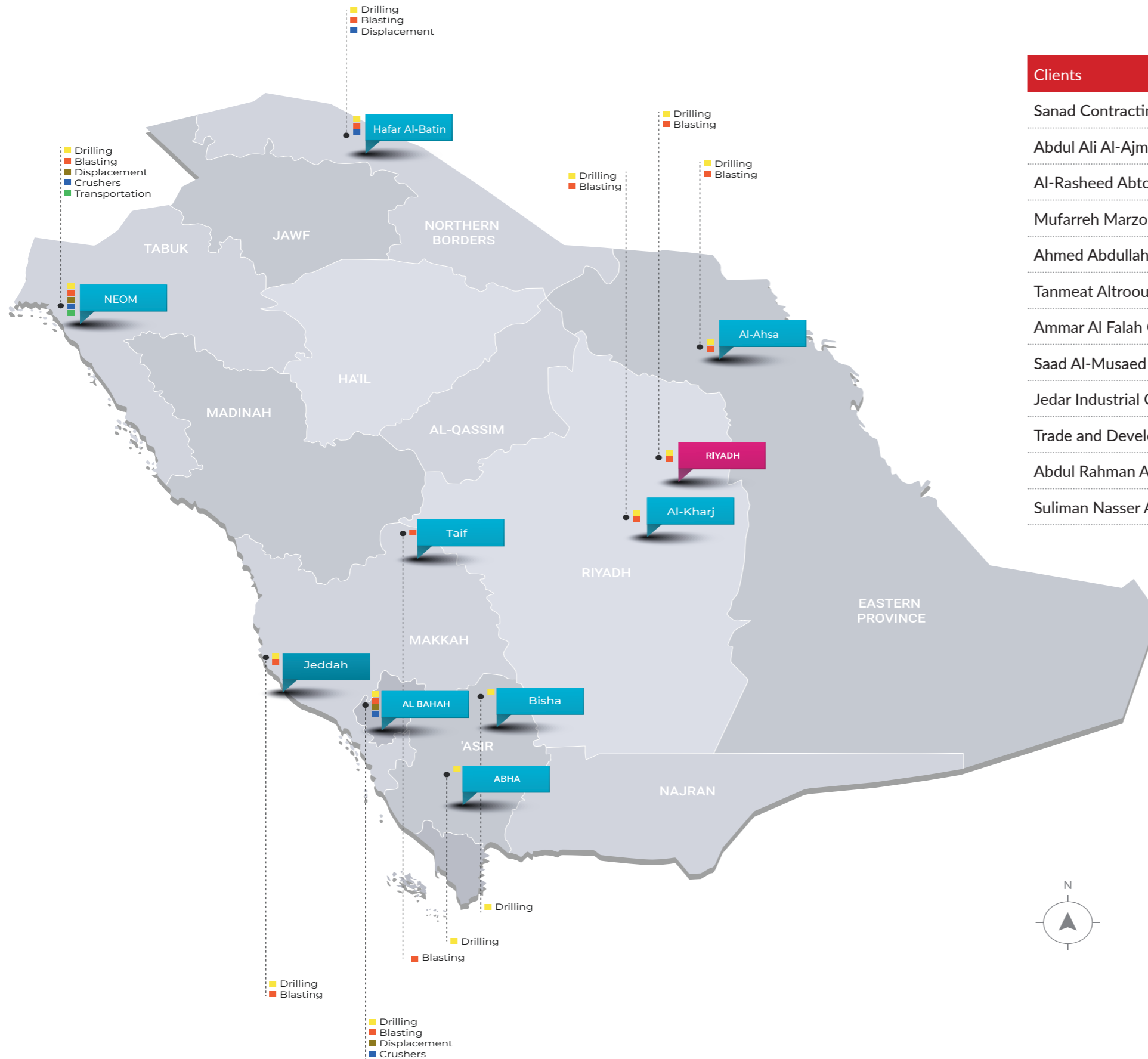
## TEAM TRACK RECORD

## SUPPLIERS





# GEOGRAPHICAL COVERAGE



# CLIENTS

## Clients

- Sanad Contracting Company
- Abdul Ali Al-Ajmi Company
- Al-Rasheed Abtong Company
- Mufarreh Marzouq Al Harbi and Partners Company
- Ahmed Abdullah Al-Shuria Contracting
- Tanmeat Altroouq for Industry Company
- Ammar Al Falah Contracting Company
- Saad Al-Musaed for Trade, Industry and General Contracting
- Jedar Industrial Company
- Trade and Development Partnership Company
- Abdul Rahman Al Mahtab Contracting Company
- Suliman Nasser Al-Turki for Contracing Est





## CONTACT US

---



3540 Prince Sultan Bin Abdulaziz, 7666 Alsulaimaniyah Dist., Riyadh 12223, Saudi Arabia

Tel.: +966 11 4869930 | Fax: +966 11 4869931

Email: [info@nmc.com.sa](mailto:info@nmc.com.sa)